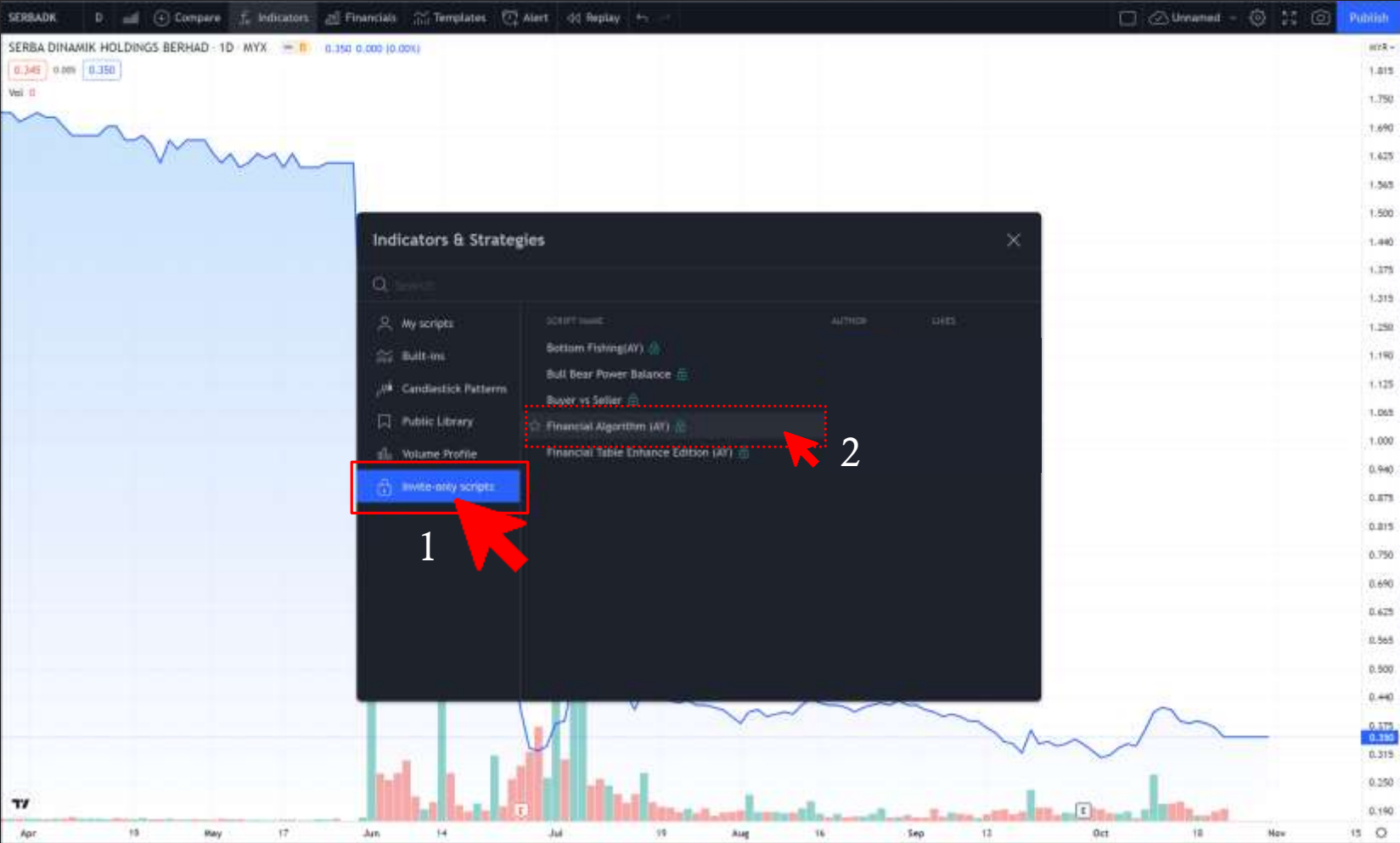


How to Apply Indicator on Chart (Web.ver)

Click “Indicators” Buttom



Click “Invite-only scripts”



Waiting 20 second for system loading



Please wait for awhile
Calculating now...



Done setup Financial Algorithm Indicator



How to Apply Indicator on Chart (Mobile.ver)

How to Apply Indicator on Chart (Mobile.ver)

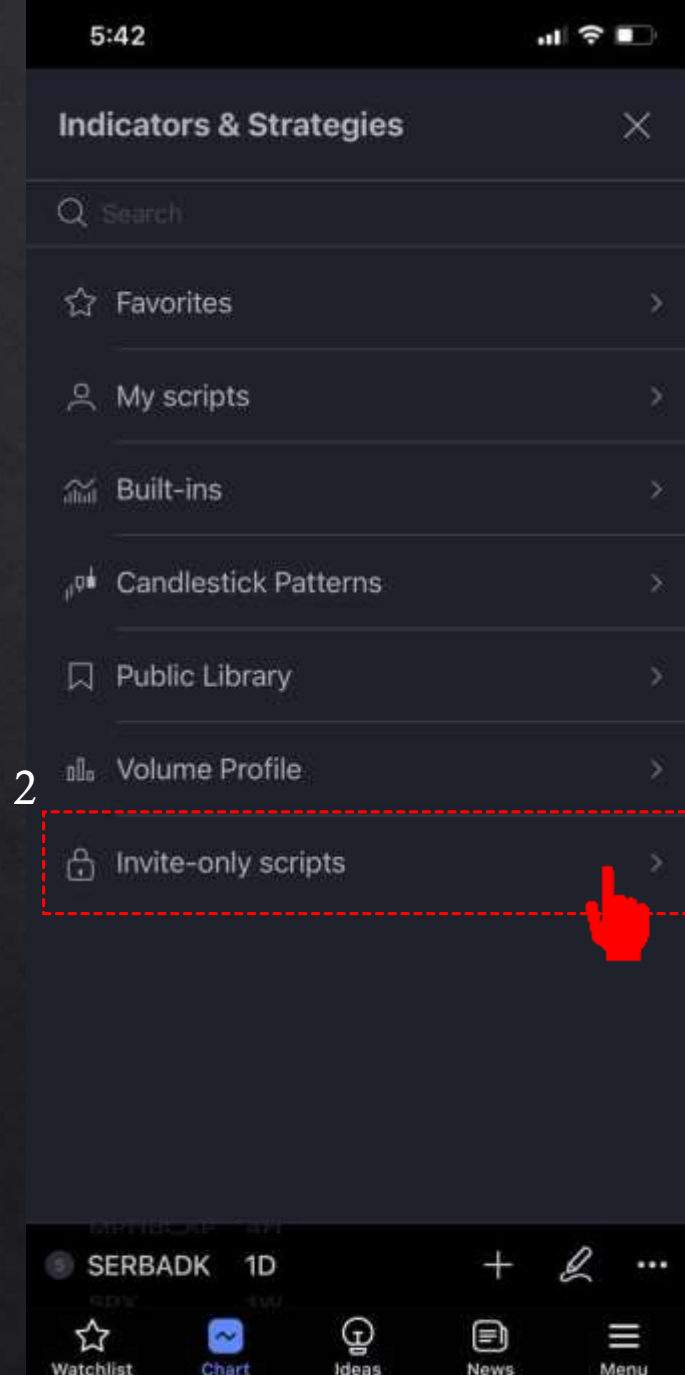
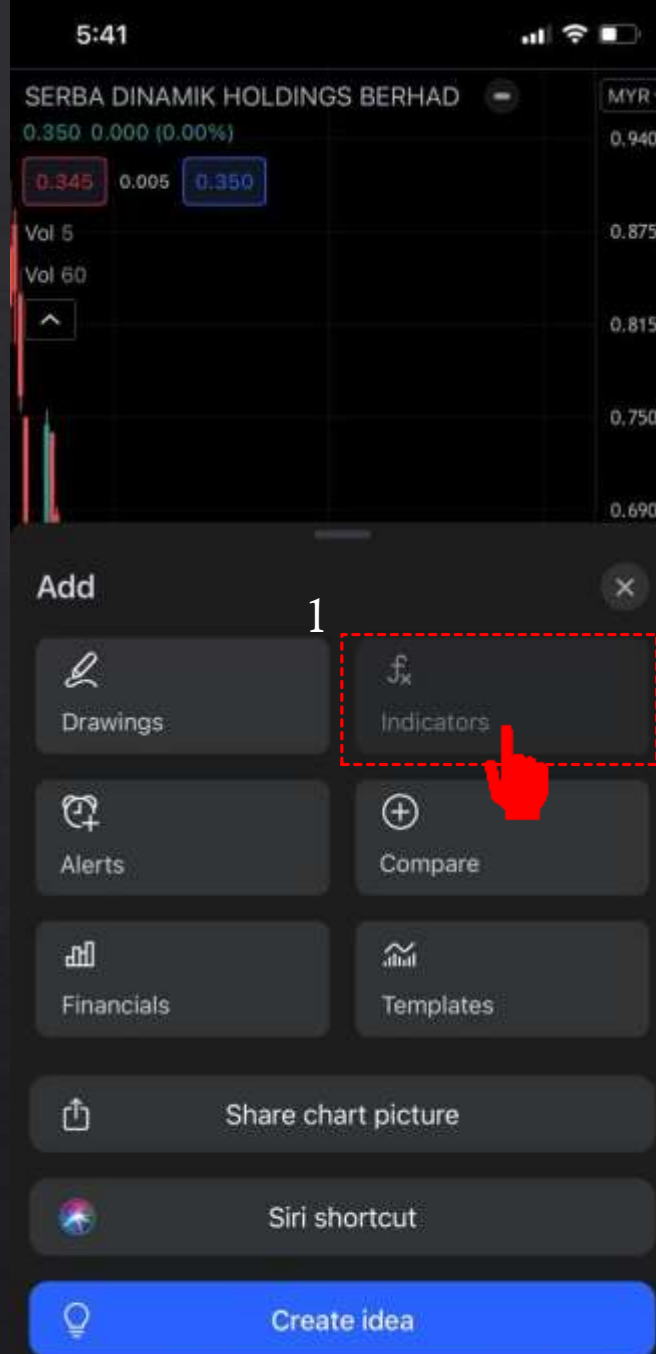
Click “+” to
open add
indicators



How to Apply Indicator on Chart (Mobile.ver)

Step 1, Click
“Indicators”

Step 2, Click
“Invite-only scripts”



How to Apply Indicator on Chart (Mobile.ver)



Please wait for awhile...
Calculating now...



Done setup Financial Algorithm Indicator

How to customise setting ?

Click "Setting" on Indicator Column



Click "Tick" to open function

The screenshot shows the SERBADA financial analysis tool. The main window displays a price chart for SERBADA (1D, MYX) with a price of 0.345. The settings panel on the right includes sections for 'EMIL FUNCTION', 'APPEARANCE', 'TABLE POSITION', and 'REVIEW CATEGORIES'. A 'Tick' icon is located at the bottom right of the settings panel, with a red arrow pointing to the '最近季度' column in the data table.

SERBADA 平均4季度	评估内容	近期4季度评估	最近季度 03 / 2021	3年度评估 2017 - 2019
综合表现		差	评级维持	连续退步
抗压能力		强劲	评级维持	退步
融资能力		好	评级维持	维持
盈利能力		中和	评级维持	维持
资产流动性		优秀	评级维持	退步
杠杆 债务		非常高	评级!	连续减少
收入质量		很差	评级维持	维持
收账能力		差	评级!	维持

最近季度	03 / 2021			
净现金	-405.457M			
自由现金流	-271.018M			
现金等价物	1.0268			
留存收益	1.5438			
现金占收入	74.11%			
现金占负债	25.57%			
现金占市值	16.56%			
流通股(FY)	32.20%			
总收入(FQ)	1.384B			
净收入(FQ)	113.318M			
利润率(FQ)	8.19%			
ROE(FQ)	20.07%			
ROA(FQ)	8.33%			
ROIC(FQ)	10.03%			
PG PB(FQ)	0.8 1.6			

How to Customise Setting?

Change Language

Change Language

The screenshot shows a financial analysis tool interface. On the left, there is a line chart for SERBA DINAMIK HOLDINGS BERHAD (1D MYX) with a price of 0.345. A blue arrow points from the 'Change Language' text to the 'Language' dropdown menu in the 'APPEARANCE' settings panel, which is currently set to '中文' (Chinese). The 'APPEARANCE' panel also shows font size (large) and table position (middle to right) settings. On the right, a table displays financial metrics for SERBA BK, comparing '近期4季度' (Recent 4 Quarters), '最近季度' (Recent Quarter), and '3年度评估' (3-Year Assessment). The table includes columns for '评估内容' (Assessment Content), '近期4季度评估' (Recent 4 Quarters Assessment), '最近季度' (Recent Quarter), and '3年度评估' (3-Year Assessment). The table data is as follows:

SERBA BK 平均4季度	评估内容	近期4季度评估	最近季度 06 / 2021	3年度评估 2018 - 2021
	综合表现	较差	评级↑	成长
	抗压能力	强劲	评级维持	退步
	融资能力	好	评级维持	维持
	盈利能力	中和	评级↓	维持
	资产流动性	优秀	评级↓	退步
	杠杆(债务)	非常高	评级↑	连续减少
	收入质量	较差	评级维持	维持
	收账能力	很差	评级维持	维持

Below the table, the '最近季度 06 / 2021' section shows various financial metrics:

最近季度 06 / 2021	净现金	自由现金流	现金等价物	留存收益	现金占收入	现金占负债	现金占市值	流通股(FY)	总收入(FQ)	净收入(FQ)	利润率(FQ)	ROE(FQ)	ROA(FQ)	ROIC(FQ)	PG PB(FQ)
	-1.722B	-406.881M	497.412M	1.558B	41.18%	12.51%	38.31%	32.20%	1.208B	14.918M	1.24%	20.07%	8.33%	10.03%	0.2 0.3

What does each chart label
means?

What does each chart label means?

Table Label Meaning

Company Name	SERBADK ROLLING 4Q	★ CONTENT	ROLLING 4Q EVAL	CURRENT Q 06 / 2021	3Y Eval 2018 ~ 2021
		Comprehensive	Very Poor	Ranking ↑	Grow
		Compressive Str	Strong	Sustain	Decline
		Borrowing Capa	Good	Sustain	Sustain
		Profitability	Moderate	Ranking ↓	Sustain
		Liquidity	Excellent	Ranking ↓	Decline
		Leverage Debt	Very Heavy	Ranking ↑	Cont_Decrease
		Quality of Earn	Very Poor	Sustain	Sustain
		Receivability	Very Poor	Sustain	Sustain

3 Years Evaluation

3 Years Maintaining "Decline"

3 Years Maintaining "Sustain"

3 Years Continuously Decrease till "Bad"

Evaluation by Comparing between 4-Quarters Rolling & Current Quarter

* Same meaning, Left label explain in chart form, right label explain in word form
 * Lite Package will not provided Chart Form.

What does each chart label means?

Evaluation & Indicator Description

All Inside The Setting

